

Sample configuration.

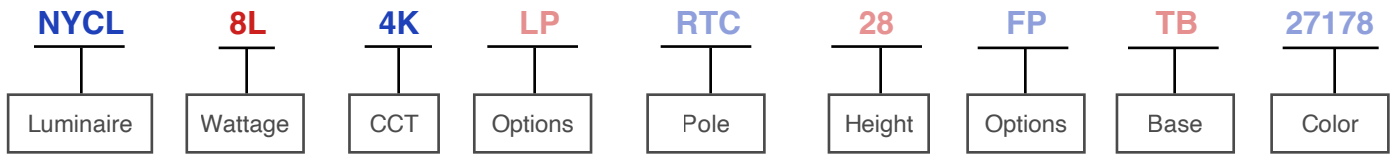
The NYCL series all cast aluminum luminaire shall consist of the curved one-piece main luminaire body, two antennas with tension rods, nose assembly, mounting arm, LED optics for IES type II medium distribution, a Class II driver assembly and a voltage/neutral indicator. The luminaire shall employ an array of LED boards for a total luminous flux of 9,220 lumens, with efficacy of 113 lm/W, CRI of 79.1, L70 lumen maintenance of greater than 109,000 hours and LCS of B2-U1-G2.

All castings shall be formed true to pattern, with no warping or mold shifting.

LED optics shall be mechanically secured to the luminaire body. Electrical components shall be mounted within the luminaire and shall be protected by a continuous silicone gasket.

Finish shall be a smooth semi-gloss TGIC polyester powder coat with a choice of five standard colors. Custom colors extra.

Luminaire ships with the antennas, tension rods and the mounting arm. It can also mount to a 2" pipe tenon (max. 5"L).



**NYCL** New York City Light

**8L** 81.7W LED

**4K** 3,878K CCT

**LP** locking photocell

**RTC** round tapered steel pole

**28** height (in feet)

**FP** festoon plate

**TB** transformer base

**27178** BLK black  
BRZ bronze  
GRN green  
GRY grey  
WHT white  
CTM custom (for example, federal silver 27178)

**SF** single fuse  
**DF** double fuse

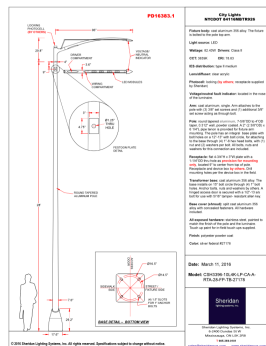
**RTA** round tapered aluminum pole

**GFI** GFI receptacle

**BA11** twin banner arm

**BP** button photocell

Far Rockaway, NY



We see what moves you.