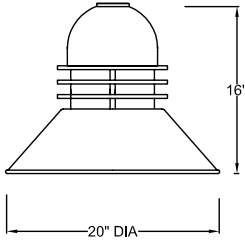
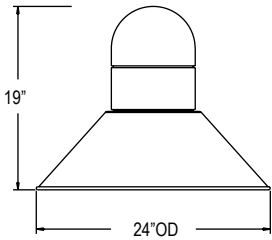


SH82 Series

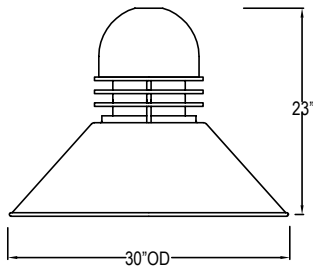
Specifications



SH82-20 with the "RN" option



SH82-24



SH82-30 with the "RN" option

The SH82 series luminaire shall consist of a cast aluminum ballast chamber, spun aluminum body, hinged door with a clear tempered glass diffuser, an integral ballast assembly and internal optical components. The optical system shall be fully rotatable. The hinged door shall be secured to the spun aluminum body. The luminaire shall have tool-less entry.

The electrical and optical components shall be mounted on a cast aluminum ballast plate within the luminaire. The medium or mogul porcelain socket shall be 4kV pulse rated. The HID ballast shall be HPF, CWA, multi-tap, supplied with capacitor and ignitor. Luminaire shall be certified to UL 1598 as suitable for wet locations. Lamps by others.

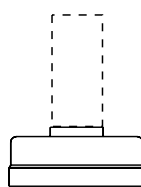
The luminaire shall attach to a side-mounting arm with two internal bolts. Order arm separately. All exposed metal parts shall receive baked-on smooth semi-gloss powder coat finish. Ships assembled, boxed and palletized.

| SH82 | 24 | 25M | 1 | HR3 | RN | BLK |
|-----------|------------------------|--|---|--|---|---|
| Luminaire | Size | Ballast | Voltage | Optics | Options | Color |
| | 20 20" skirt | 5M - 50MH 7M - 70MH 10M - 100MH 15M - 150MH 17M - 175MH 25M - 250MH 40M - 400MH ^{Note 1} | 1 - 120V 2 - 208V 3 - 240V 4 - 277V 5 - 347V | HR3 - segmented reflector IES III HR5 - segmented reflector IES V | HS - house side shield RN - solid rings SF - single fuse DF - double fuse BP - button photocell (remote) LP - locking photocell (remote) | BLK - black GRN - green BRZ - bronze GRY - grey WHT - white CTM - custom |
| | 24 24" skirt | 5H - 50HPS 7H - 70HPS 10H - 100HPS 15H - 150HPS 25H - 250HPS | | | | |
| | 30 30" skirt | | | | | |

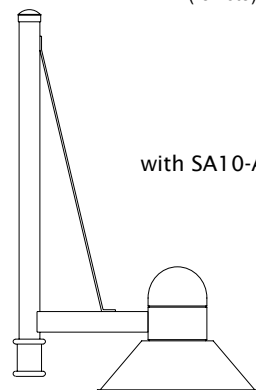
Notes:

1. SH8230 only

Suggested pole and bracket combinations



SP25



with SA10-A

Sheridan
lightingsystems, inc.