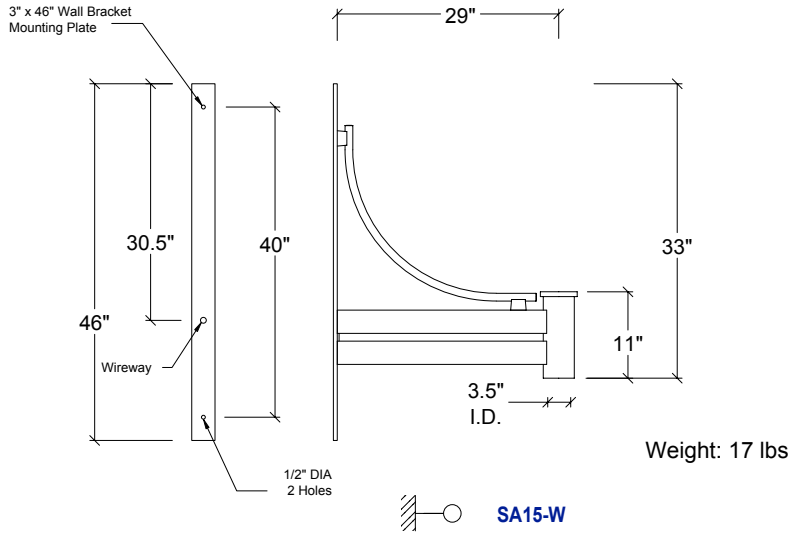


SA15

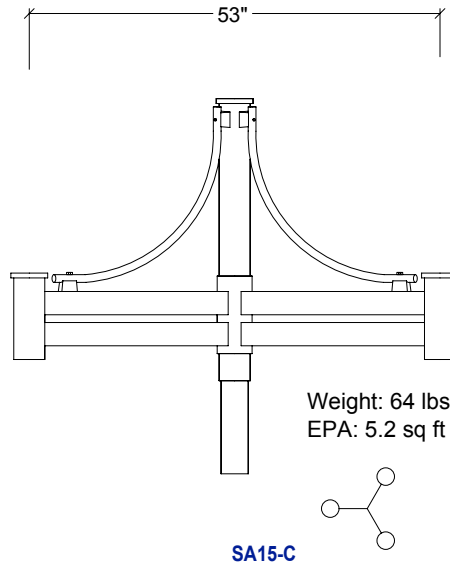
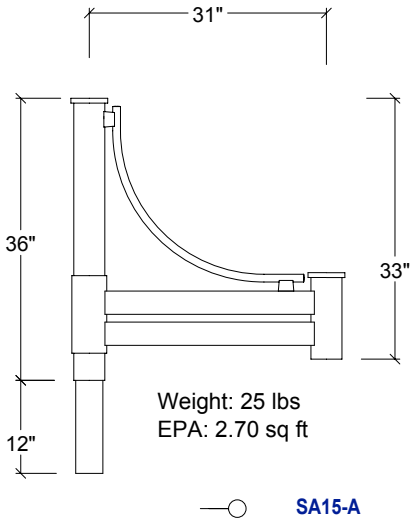


The arm shall be SA15 _____ (specify configuration), consisting of an arm with a scroll, welded onto an adaptor and a 4"OD central column equipped with a pole tenon. Wall bracket shall be welded to a cast aluminum wall plate.

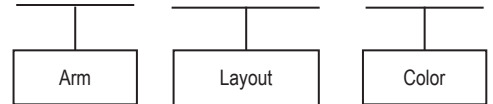
The arm shall be made of two 2" x 3" x 1/8" thick aluminum rectangles, with a mechanically fastened scroll made of bent extruded 1"OD x 1/8" thick aluminum. The column shall be extruded non-fluted aluminum. All hardware shall be tamper resistant, stainless steel.

A variety of configurations is available, some of which are illustrated here. Those not illustrated are noted in the bottom left-hand corner. Non-standard configurations may be feasible, please consult factory for details.

Post top arms shall be equipped with a 12"L x 3-1/2" OD round pole tenon. Post top arms are not pre-wired and shall be wired by the contractor. Wall brackets shall be pre-wired, with a 12" slack for ease of wiring to source on the wall side and for wiring with wire nuts on the fixture side. Mounting hardware for wall brackets is not included. All exposed metal parts shall receive baked-on smooth semi-gloss powder coat finish. Ships boxed and palletized.

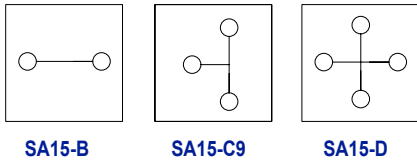


SA15

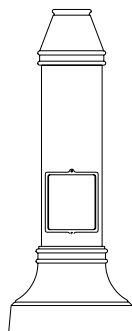


- W** - wall bracket
- A** - single at 90°
- B** - twin at 180°
- C9** - triple at 90°
- C** - triple at 120°
- D** - quad at 90°
- BLK** - black
- GRN** - green
- BRZ** - bronze
- GRY** - grey
- WHT** - white
- CTM** - custom

ADDITIONAL CONFIGURATIONS AVAILABLE



SP10



SH90



Suggested pole and luminaire combinations

Sheridan
lighting systems, inc.