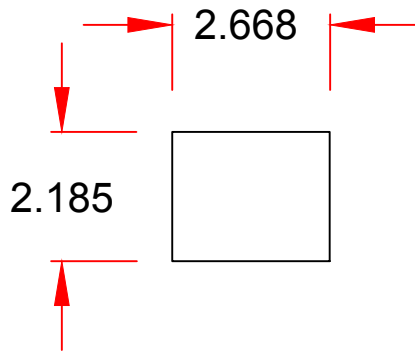
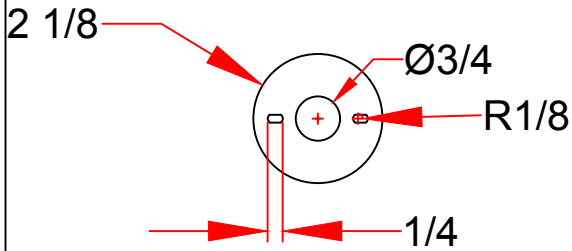
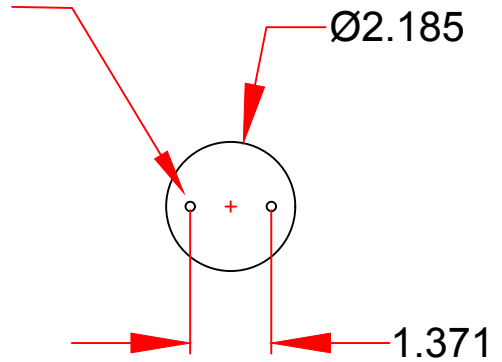


**DWG SL-40V**



(2) 8-32 captive screws



**Size:** E39

**Type:** position-oriented POMB

**Material:** porcelain

**Rated voltage:** 600V

**Max wattage:** 2000W

**Pulse rating:** 6KV

**Leads:** 24"L, 16ga braided

**Other:** screw shell, captive mounting screws,

**Insulator:** heavy duty dielectric insulator

**UL Listing:** cUL and UL listed.

**Weight:** .506 lbs

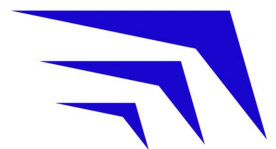
**Dimensions:** 2.66 × 2.185 × 2.185 in

**Color:** Yellow

**MOGUL BASE SOCKET**

**Date:** December 2, 2022

**Model:** SL-40V



Sheridan Lighting Systems, Inc.  
6-2400 Dundas St W  
Mississauga, ON L5L 2R9